

Terror Screen Security Roller Shutter LPS1175

SR1: Issue 7. optional certified fire resistance to 4 hours

240

Issue: 2

Hart Door Systems (HDS) manufacture and install specialist roller shutter doors to the LPS1175 security standards SR1, SR2, SR3 and SR4 which comply to loss prevention, insurance and Police Preferred 'Secured by Design' standards.

Fire compliance option: certified to BS 476: part22 up to 4 hours.

HDS products are listed in the red book online directory of BRE Global, owner of the internationally recognised LPCB and BREEAM and BRE Global certification schemes. LPCB is responsible for the approval of fire and security products and services listed in the Red Book.

CONSTRUCTION

Curtain:

The door curtain is formed from 73mm convex steel galvanised interlocking steel roller shutter laths retained at ends via end locks. Solid or perforated sections. The bottom rail is a "T" section interlocking section with optional rubber seal. The curtain is available in plastisol or powder coat finish to standard colours, larger sizes may need to be wet coat finished.

Side guides:

Fabricated from steel continuous angle and steel guide channel in galvanised finish and bolted at fixed centres to an appropriate structure. The guides optionally are available in power coat finish

Motor and Drive:

Depending on door size the motor drive is constructed using either "Safedrive" direct drive or via chain drive and reduction gearing supported via a safety brake. The roller tube is adequate for the door dimension and will have a deflection ratio of less than 400:1.

Roller Box:

Optional Hood, motor hood, flashings in galvanised steel materials or in powder coat. Stainless steel options also available.

Operation:

The Door can be press button operated or automatically operated. Various levels of safety can be fitted including safe leading edge and or photocells movement sensors and so on. Controls should be mounted at least 1m from the door structure.



Locking:

1. Manually operated slip bolts on the bottom rail or pin locks on the guide, manually interlocked to the control panel to prevent accidental operation.
2. Electrically operated by press button when the door is closed
3. Fully automated.
4. Optional Monitoring and signalling of lock status.

Standards compliance:

LPS1175:SR1

And BSEN 12453:2005, BSEN 12604:2000, BSEN 12635:2002, BSEN 12978:2003.

Dimensions:

Doors are all made to order to suit local site requirements. Doors are available from 1.2 metre wide to 9 metres wide and up to 9 metres high.

Copyright retained on all drawings methods and engineering construction.



Speedor Super



Speedor Mini



Speedor Combi



Roller Shutter Fire and/or Security



Automatic Conveyor Door



Machine Guard Automated



High Speed Fire Resistant Conveyor



Fire Shutter to UK or US Standards



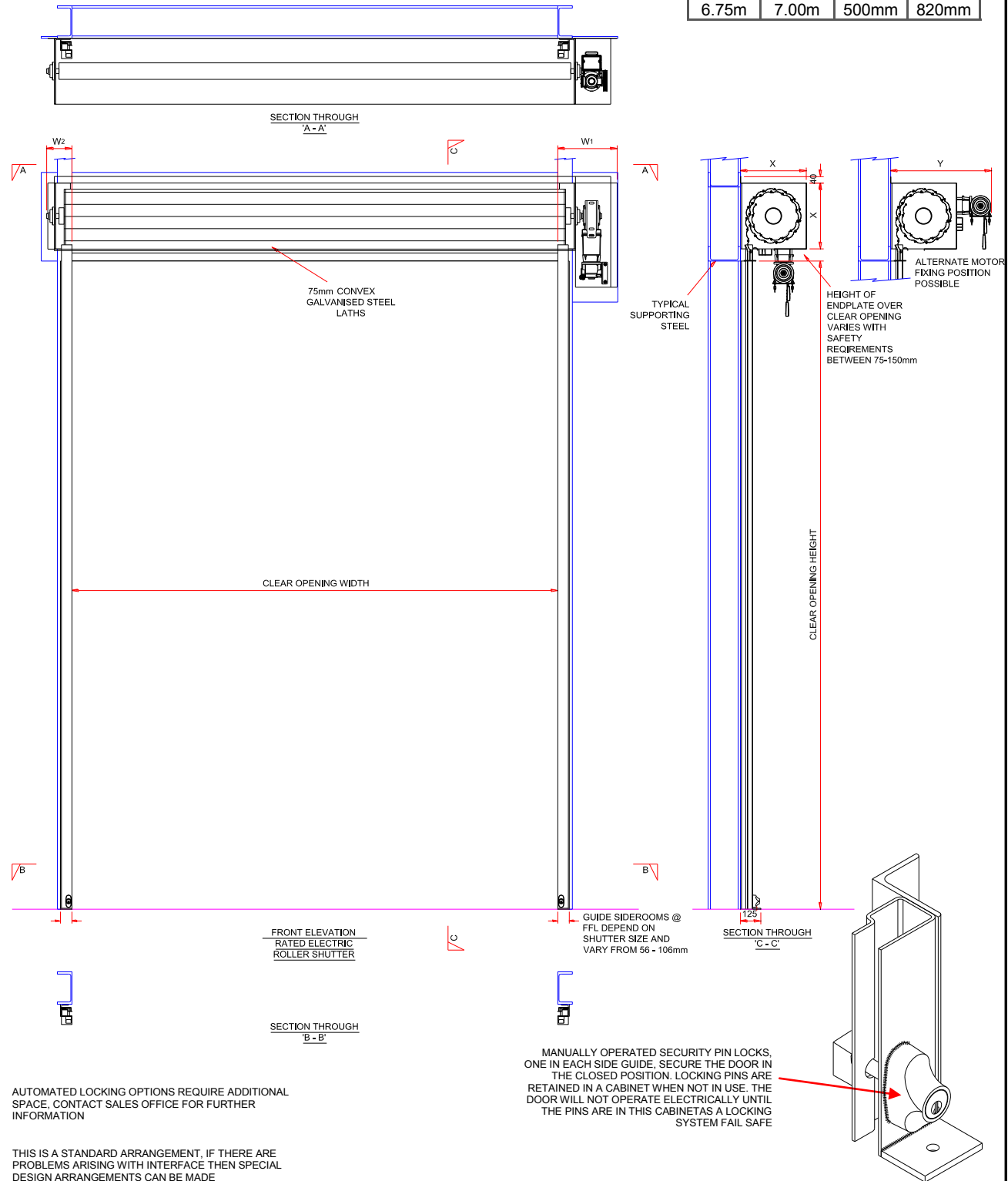
Hart Door Systems Limited
Redburn Road
Westerhope Industrial Estate
Newcastle upon Tyne
NE5 1PJ UK

Tel: +44 (0)191 214 0404
Fax: +44 (0)191 2711611
E: info@hartdoors.com
Web: www.hartdoors.com

Structural opening substrate must be suitably reinforced brickwork/concrete/steelwork as detailed in the standard LPS1175 Issue 7 Page 17. It is assumed that the substrate onto which the product is fitted provides a resistance to attack at least equivalent to that afforded by the product itself.

Safedrive sideroom above lintel (use as guide only—refer to Hart for confirmation)			
Motor Side		Non-Motor Side	
65 Guides		65 Guides	
Min	Max	Min	Max
311mm	355mm	146mm	181mm

End Plate/Motor Arrangement Sizes			
Doors up to			
Width	Height	X	Y
4.50m	2.50m	305mm	565mm
4.00m	3.50m	356mm	590mm
4.75m	4.50m	406mm	715mm
5.50m	6.00m	456mm	715mm
6.75m	7.00m	500mm	820mm



AUTOMATED LOCKING OPTIONS REQUIRE ADDITIONAL SPACE, CONTACT SALES OFFICE FOR FURTHER INFORMATION

THIS IS A STANDARD ARRANGEMENT, IF THERE ARE PROBLEMS ARISING WITH INTERFACE THEN SPECIAL DESIGN ARRANGEMENTS CAN BE MADE



Note: Sizes above are estimates only. Please contact us direct for actual dimensions and detail required for your door size.